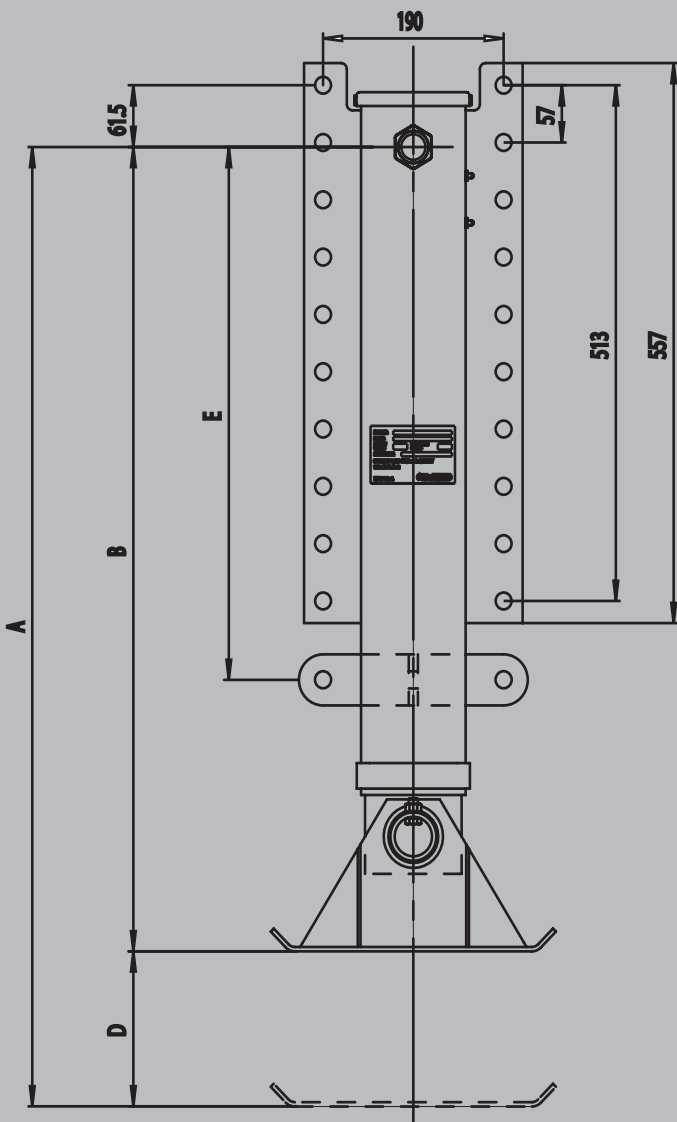


SAF ATLAS 24



NEW!

The SAF ATLAS 24 Landing Gears were originally developed for the most demanding trailer applications in the world – USA and Canada. They have proven their worth over millions of miles under the toughest conditions – on the desert highways in the western USA and the brutal winters of Canada's far north.

This trailer support system is now available in Europe as the SAF ATLAS 24 – an especially economic, robust and reliable solution making it perfect for just about any trailer.

SAF ATLAS 24 Landing Gear meet the following requirements:

- AAR – Association of American Railroads
- TTMA – Truck Trailer Manufacturers Association

In Germany please observe:

- TÜV and German Road Traffic Registration Regulations.
- The Landing Gear should always be operated in accordance with the instructions for the semi-trailer.

Patented CONSTANT MESH GEAR (CMG)

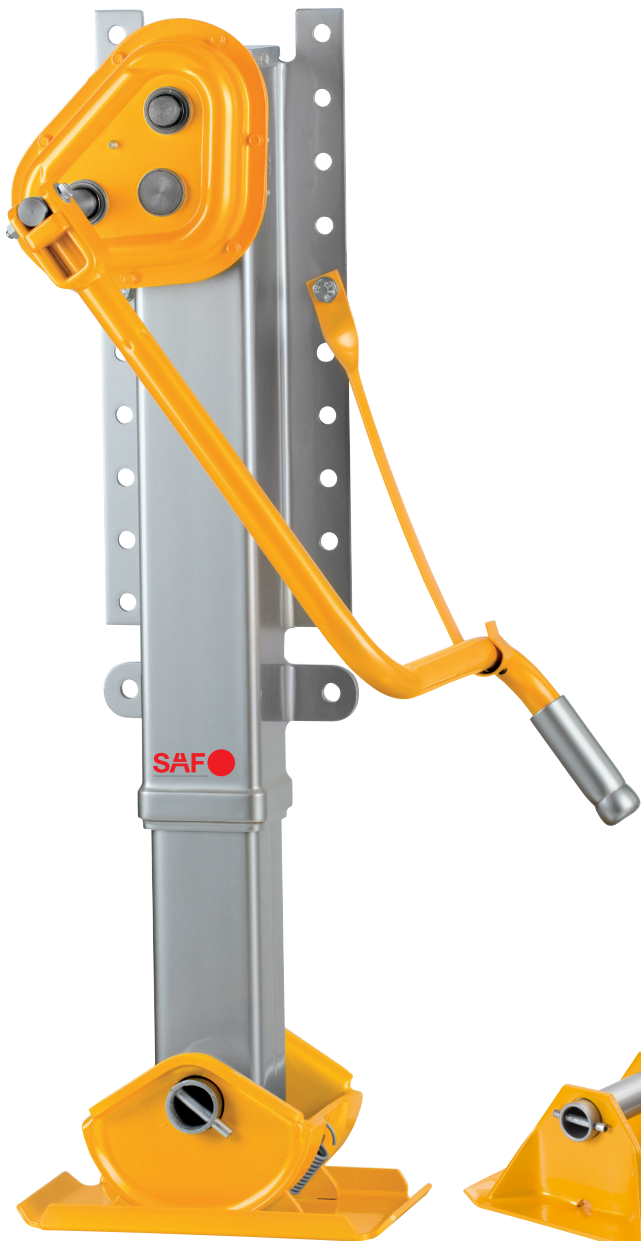
- to change gear, the gear does not need to be shifted, just engage and dis-engage high or low gear with the journal on the drive shaft
- that makes gear changes easier, safer and more convenient regardless of the grease level or external temperature (such as in winter)

SAF 
SAF-HOLLAND Group

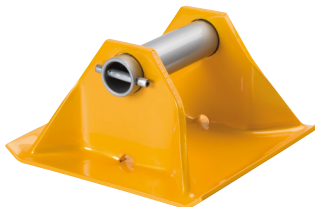
ATLAS 24 TRAILER SUPPORT SYSTEM

72,000 kg static load
24,000 kg lifting capacity





Compensating foot



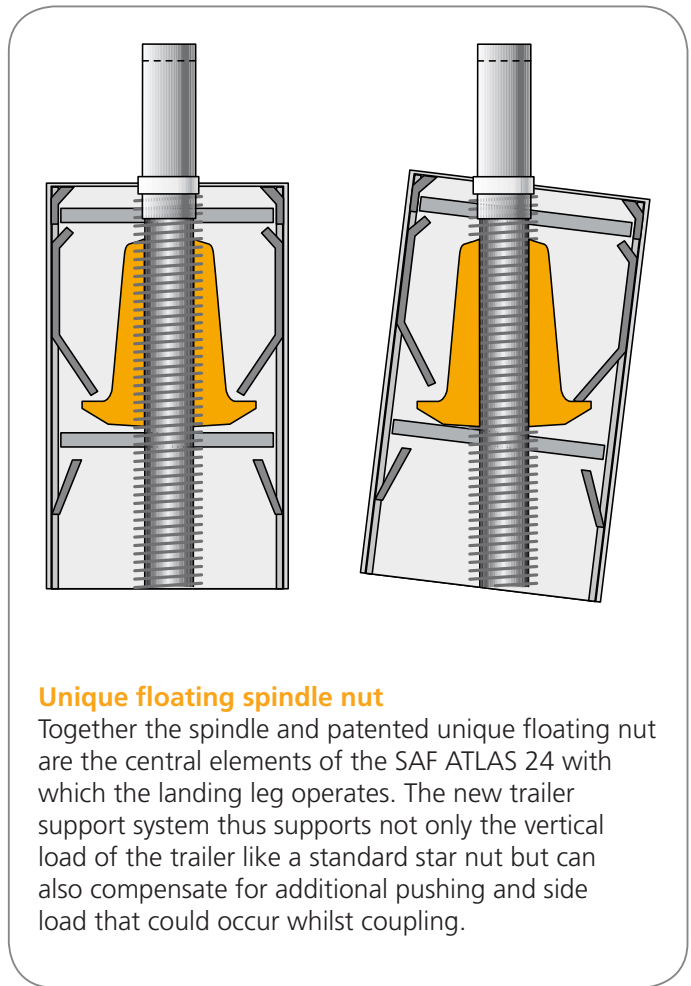
Sand shoe high



Rocking foot



Wheel



Unique floating spindle nut

Together the spindle and patented unique floating nut are the central elements of the SAF ATLAS 24 with which the landing leg operates. The new trailer support system thus supports not only the vertical load of the trailer like a standard star nut but can also compensate for additional pushing and side load that could occur whilst coupling.

Patented CONSTANT MESH GEAR (CMG)

- external gearbox enables easy inspection when necessary
- special coating provides long-term protection against environmental factors and stone chipping
- high degree of operational reliability with its multi-range grease (-50° to +120° C)
- high gear 1.8 crank turns per cm
- low gear 13.5 crank turns per cm

Patented SPEED CRANK (SC)

- automatic coupling when you lift the crank
- easy and reliable one-hand operation
- especially easy to handle in comparison to conventional cranks

TABLE OF PARTS

Compensating foot

Complete set*	mounting height					
	700 mm	730 mm	760 mm	800 mm	860 mm	920 mm
Part-No.	1025 30 000454 0	1025 30 000455 0	1025 30 000456 0	1025 30 000457 0	1025 30 000458 0	1025 30 000459 0
Description	LGA S 70-33 F S	LGA S 73-36 F S	LGA S 76-39 F S	LGA S 80-43 F S	LGA S 86-48 F S	LGA S 92-55 F S

Sand shoe high

Complete set*	mounting height					
	700 mm	730 mm	760 mm	800 mm	860 mm	920 mm
Part-No.	1025 30 000460 0	1025 30 000461 0	1025 30 000462 0	1025 30 000463 0	1025 30 000464 0	1025 30 000465 0
Description	LGA S 70-33 FT	LGA S 73-36 FT	LGA S 76-39 FT	LGA S 80-43 FT	LGA S 86-48 FT	LGA S 92-55 FT

Wheel

Complete set*	mounting height					
	700 mm	730 mm	760 mm	800 mm	860 mm	920 mm
Part-No.	1025 30 000466 0	1025 30 000467 0	1025 30 000468 0	1025 30 000469 0	1025 30 000470 0	1025 30 000471 0
Description	LGA S 70-33 F R	LGA S 73-36 F R	LGA S 76-39 F R	LGA S 80-43 F R	LGA S 86-48 F R	LGA S 92-55 F R

Rocking foot

Complete set*	mounting height					
	700 mm	730 mm	760 mm	800 mm	860 mm	920 mm
Part-No.	1025 30 000472 0	1025 30 000473 0	1025 30 000474 0	1025 30 000475 0	1025 30 000476 0	1025 30 000477 0
Description	LGA S 70-33 FA	LGA S 73-36 FA	LGA S 76-39 FA	LGA S 80-43 FA	LGA S 86-48 FA	LGA S 92-55 FA

Leg w/o foot

	mounting height					
	700 mm	730 mm	760 mm	800 mm	860 mm	920 mm
Part-No.	1025 30 000394 0	1025 30 000396 0	1025 30 000398 0	1025 30 000400 0	1025 30 000402 0	1025 30 000404 0
Description	LGA O 70-33 F	LGA O 73-36 F	LGA O 76-39 F	LGA O 80-43 F	LGA O 86-48 F	LGA O 92-55 F

Leg w/o foot-gearside

	mounting height					
	700 mm	730 mm	760 mm	800 mm	860 mm	920 mm
Part-No.	1025 30 000395 0	1025 30 000397 0	1025 30 000399 0	1025 30 000401 0	1025 30 000403 0	1025 30 000405 0
Description	LGA G 70-33 F	LGA G 73-36 F	LGA G 76-39 F	LGA G 80-43 F	LGA G 86-48 F	LGA G 92-55 F

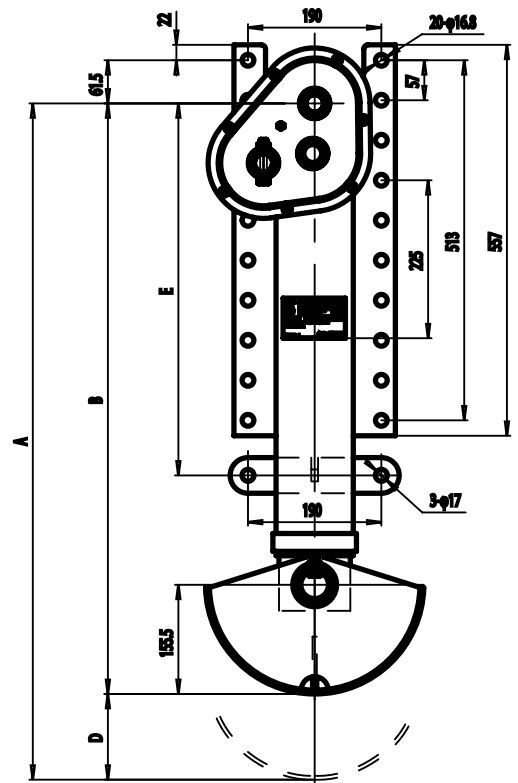
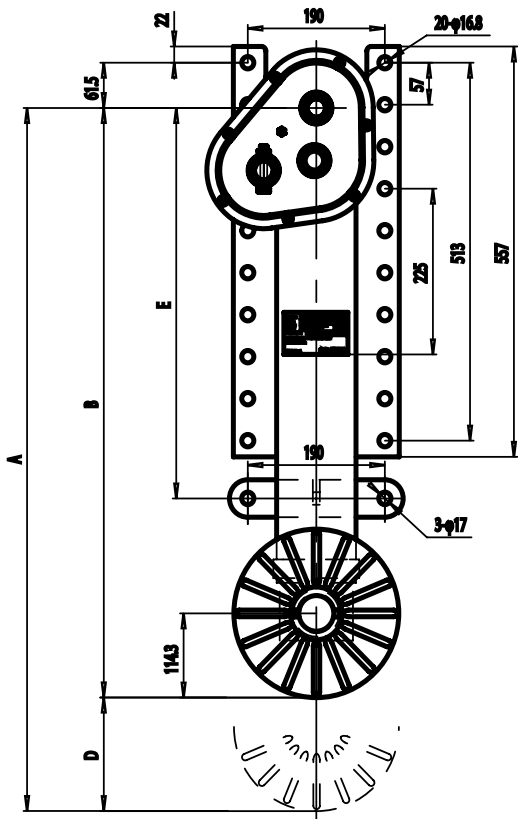
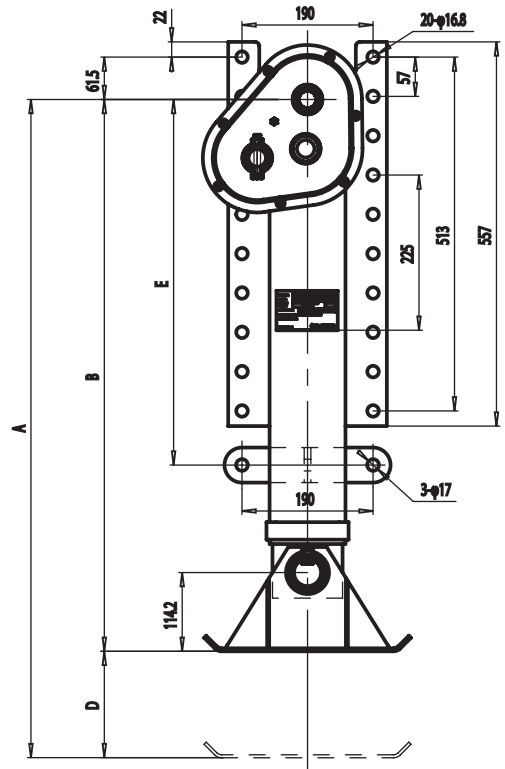
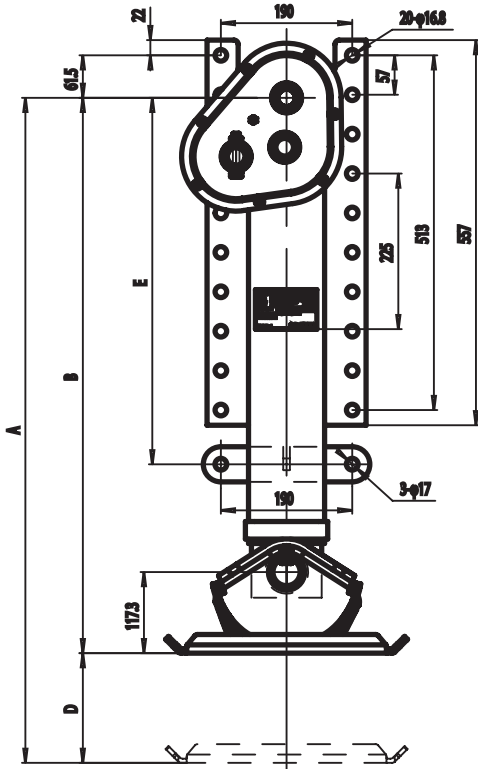
Please note:

Complete set is always delivered with standard accessories crank-holder, cross-drive shaft 1800 mm and crank 500 mm (20"). Should a different set-up be needed, all parts must be ordered separately.

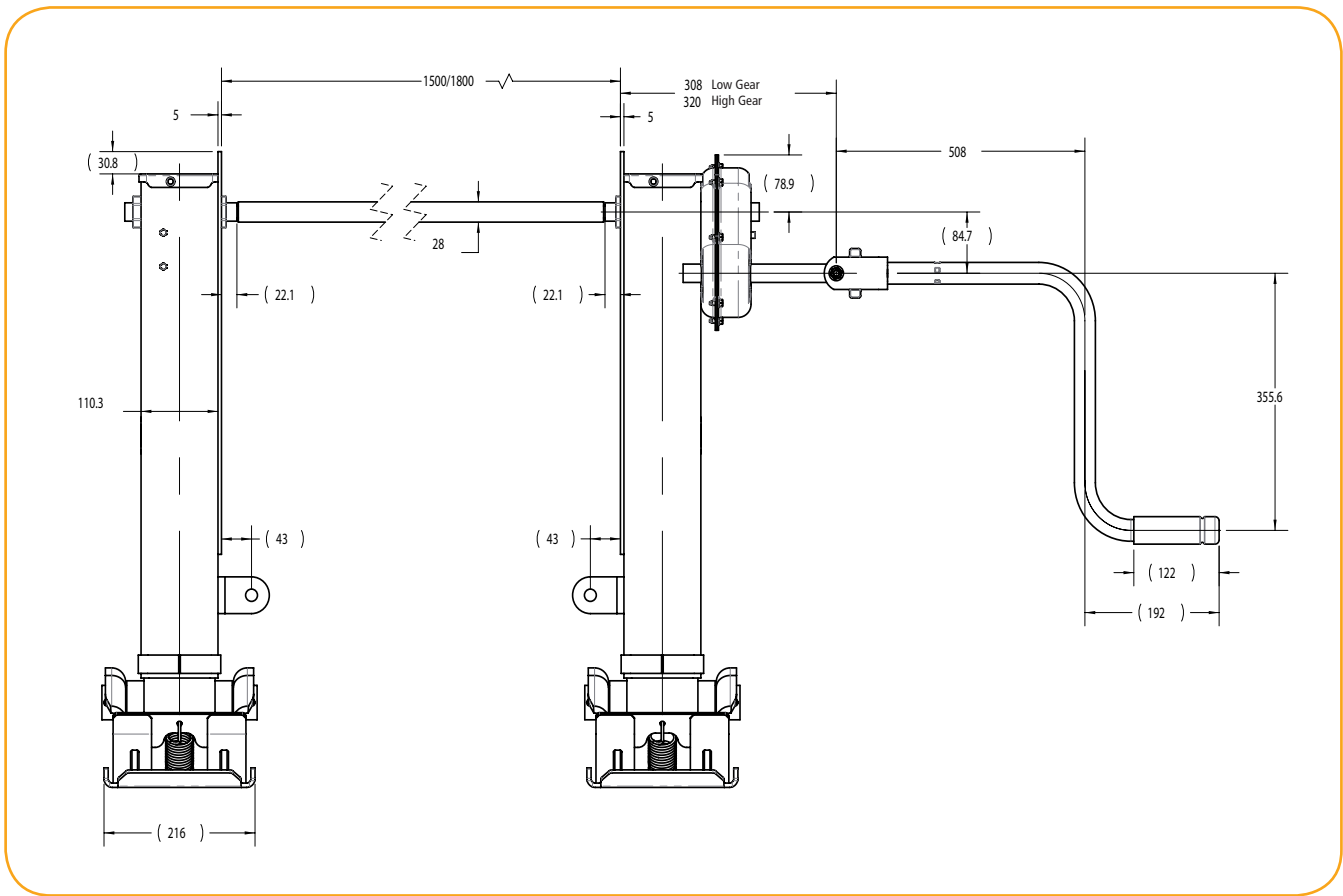
Other mounting heights upon request.



- TÜV and European Road Traffic Registration Regulations.
- The Landing Gear should always be operated in accordance with the instructions for the semi-trailer.



PARTS OVERVIEW



All figures in mm.

SPARE PARTS AND ACCESSORIES

Part-No.	Description
2054 20 000002 0	Crank 350 mm (14")
2054 20 000003 0	Crank 500 mm (20")
XA-60024	Crank-holder (bolted)
113401	Cross drive shaft 1500 mm
113402	Cross drive shaft 1800 mm
2034 30 000010 0	Spare part kit "Compensating Foot"
2034 30 000007 0	Spare part kit "Sand Shoe high"
2034 30 000008 0	Spare part kit "Rocking Foot"
2034 30 000009 0	Spare part kit "Wheel"



SAF's history begins in 1881 in a village forge in Germany with the invention of a new plough. The family business soon starts building steel axles for agricultural vehicles, and under the name Otto Sauer Achsenfabrik (SAF) develops into one of the leading manufacturers of trailer axles and suspension systems in Europe.

A safety coupling between plough and horse team can be found at the beginning of Holland's history. The Safety Release Clevis Company was founded in South Dakota, USA, in 1910. After its move to Holland, Michigan, the company emerges as one of the largest supplier companies to the commercial vehicles industry under the name The Holland Hitch Company.

The merger of the two companies to form SAF-HOLLAND in 2006 creates one of the leading global suppliers of high-quality components and services for the commercial vehicle industry. Alongside axle and suspension systems for trailers and semi-trailers, the product range also includes kingpins and landing gear as well as fifth wheels for tractors, air suspensions, coupling products and numerous other components for buses and trucks.

In 2008, SAF-HOLLAND takes over Georg Fischer Verkehrstechnik, a leading supplier to the commercial vehicle industry, expanding its product range with GF fifth wheels and kingpins as well as the TRILEX wheel system and accessories for tractors, semitrailers and trailers.

Today the SAF-HOLLAND group is represented on all continents and distributes its products and services worldwide under the brand names SAF and HOLLAND as well as GF, TRILEX and NEWAY. It possesses its own distribution network with global service and dealer locations.



SAF-HOLLAND components, whether fifth wheel or landing gear, have a service-friendly design and are manufactured using up-to-date production facilities, constantly undergoing stringent end-of-line testing.

If a replacement part is required for service or repair work, we always recommend installing SAF-HOLLAND original parts. These are manufactured to the same high standards as our OEM and will grant you the same comforting level of security and peace of mind that SAF-HOLLAND has stood for through the years. We recommend to specify SAF-HOLLAND Original Parts when servicing your SAF-HOLLAND product.

Always be sure to spec SAF-HOLLAND Original Parts when servicing your SAF-HOLLAND product.

SAF-HOLLAND GmbH

Business Unit Aftermarket · Hauptstraße 26 · 63856 Bessenbach · Germany
Tel +49 6095 301-0 · www.safholland.com

